

Notices to Mariners, SWEDEN Swedish Maritime Administration



Areas in Swedish Notices to Mariners



NtM-Editorial office
Swedish Maritime Administration
601 78 Norrköping

Sweden
Tel: 0771 630 605
E-mail: ufs@sjofartsverket.se

Publisher:
Hydrographer Patrik Wiberg

ANNOUNCEMENTS

No Announcements in this booklet.

NOTICES

Areas without notices in this booklet

The Quark
Sea of Bothnia
Sea of Åland and Archipelago Sea
Gulf of Finland
Gulf of Riga
South-Eastern Baltic
The Sound
The Belts
Kattegat
Skagerrak
Inshore waters
not area bound

Bay of Bothnia

*** 17732 (P)**

Chart: 415, 4151

Sweden. Bay of Bothnia. Piteå. Bondöfjärden. Amendments to buoyage.

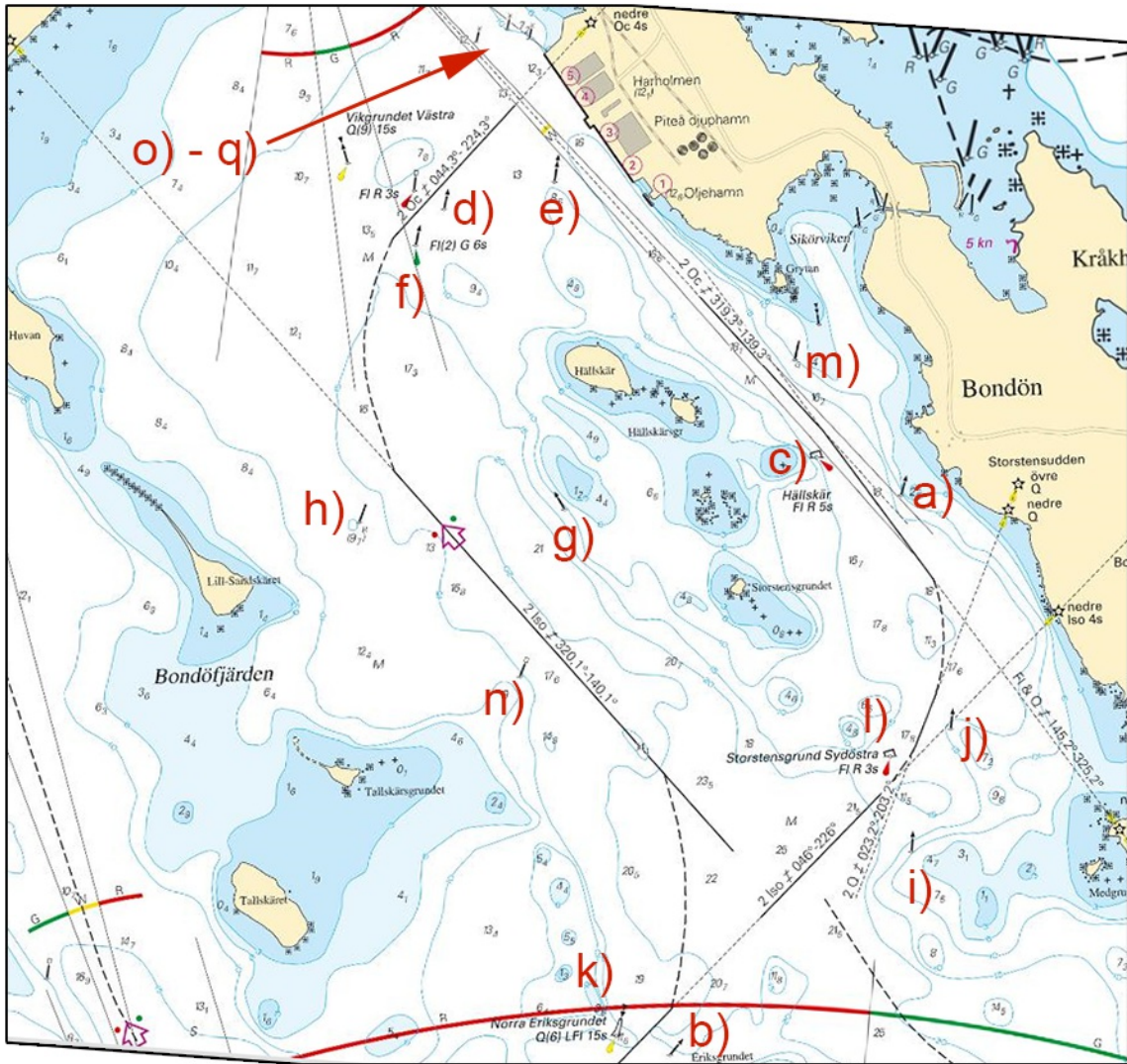
The buoyage in 'Bondöfjärden' SE of Piteå will undergo amendments according to below, starting in July, 2023.

When the changes are completed a new NtM announcement will be made.

Buoyage in actual chart **Buoyage after amendments**

starboard-hand spar buoy	starboard-hand light spar buoy Fl G 3s	a)	65-13,289N	021-39,189E	
starboard-hand spar buoy	starboard-hand light spar buoy Iso G 3s	b)	65-11,970N	021-37,775E	'Eriksgrundet'
port-hand light buoy Fl R 5s	port-hand light spar buoy Iso R 3s	c)	65-13,386N	021-38,715E	'Hällskär'
starboard-hand spar buoy	starboard-hand light spar buoy Fl G 3s	d)	65-14,006N	021-36,640E	
north cardinal spar buoy	north cardinal light spar buoy Q	e)	65-14,063N	021-37,272E	
starboard-hand light spar buoy Fl(2) G 6s	starboard-hand light spar buoy Iso G 3s	f)	65-13,922N	021-36,472E	
starboard-hand spar buoy	starboard-hand light spar buoy Fl G 3s	g)	65-13,280N	021-37,273E	
port-hand spar buoy	port-hand light spar buoy Fl R 3s	h)	65-13,264N	021-36,1E	
starboard-hand spar buoy	starboard-hand light spar buoy Fl G 3s	i)	65-12,437N	021-39,185E	
starboard-hand spar buoy	starboard-hand light spar buoy Fl G 3s	j)	65-12,727N	021-39,43E	
south cardinal light buoy Q(6) LFl W 15s	port-hand light spar buoy Iso R 3s	k)	65-12,02N	021-37,473E	'Norra Eriksgrundet'
port-hand light buoy Fl R 3s	port-hand light spar buoy Iso R 3s	l)	65-12,667N	021-39,08E	'Storstensgrund Sydöstra'
starboard-hand spar buoy	starboard-hand light spar buoy Fl G 3s	m)	65-13,62N	021-38,608E	
port-hand spar buoy	port-hand light spar buoy Fl R 3s	n)	65-12,884N	021-36,988E	
special purpose spar buoy with top mark	special purpose light spar buoy Fl G 3s	o)	65-14,403N	021-36,852E	
special purpose spar buoy with top mark	special purpose light spar buoy Fl G 3s	p)	65-14,431N	021-37,029E	
special purpose spar buoy with top mark	special purpose light spar buoy Fl G 3s	q)	65-14,407N	021-37,154E	

Bsp Bottenviken 2018/s35, s36, s55, s56, Bsp Bottenviken 2023/s35, s36, s55, s56



Buoyage that will undergo amendments in 'Bondöfjärden', Piteå

Piteå Port & Hub. Publ. 12 Jul 2023

Northern Baltic

* 17725

Chart: 611

Sweden. Northern Baltic. Norrtälje. Vertical clearance under bridge.

Amend	vertical clearance to 2.7 meters	59-45,424N	018-42,748E
-------	----------------------------------	------------	-------------

Bsp Stockholm N 2022/s62

Norrtälje kommun. Publ. 12 Jul 2023

*** 17771****Chart: 612****Sweden. Northern Baltic. Stockholms skärgård. Norra Ljusterö. Klintsundet.
Phone number changed.**

The phone number to the bridge master at bridge 'Klintsundsbron' has changed.

The number that should be used until further notice is +46(0)76-695 60 72

For more information, please visit the Swedish Maritime Administration website.

	Bridge 'Klintsundsbron'	a)	59-32,255N	018-45,212E
Replace	Note 225			

<https://www.sjofartsverket.se/sv/tjanster/kanaler-slussar-broar/>

Bsp Stockholm N 2022/s29

Note 225**THE BRIDGE AT KLINTSUNDET**

Vessels requesting bridge opening shall make two short and one long blast or call the bridge master.

Bridge signals:

FR	Bridge is closed.
FR + FW	Signal acknowledged.
FG	Bridge open, proceed.

The bridge opens 1 June - 31 August between 0800 - 2000.

Contact information, visit www.sjofartsverket.se

BRON ÖVER KLINTSUNDET

Fartyg som önskar broöppning skall avge två korta och en lång ljudsignal eller ringa brovakten.

Brosignaler:

FR	Bron stängd.
FR + FW	Signal uppfattad.
FG	Bron öppen, passera.

Bron öppnas 1 juni - 31 augusti mellan klockan 0800 - 2000.

Kontaktuppgifter, besök www.sjofartsverket.se

New version of Note 225

Trafikverket. Publ. 12 Jul 2023

Lake Mälaren and Södertälje Canal

* 17712

Chart: 1131

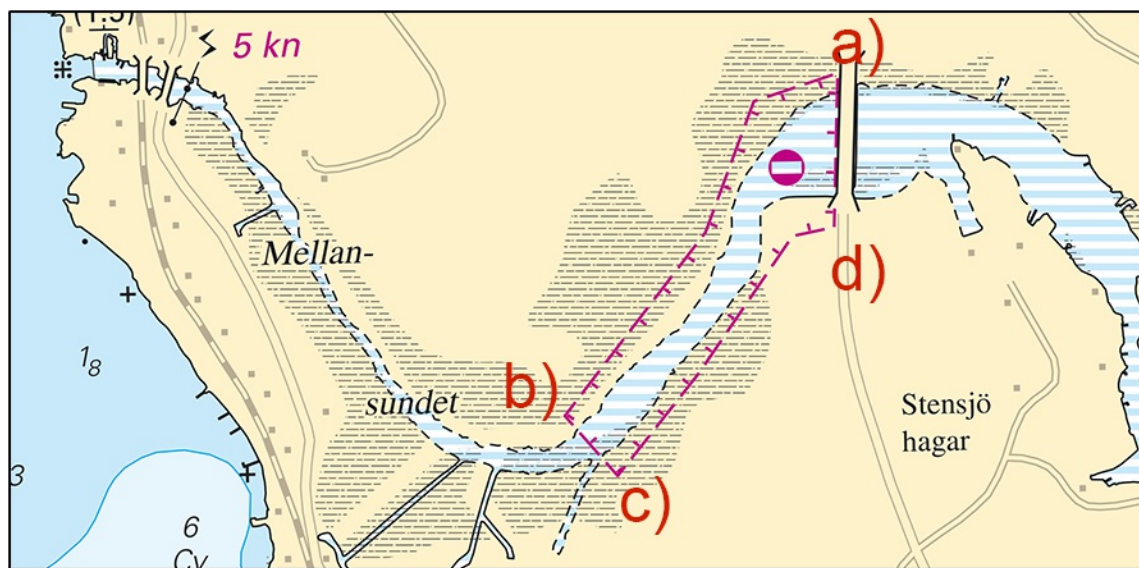
Sweden. Lake Mälaren and Södertälje Canal. Mälaren. N of Kvicksund. Mellansundet. Area closed for all traffic.

Period of time: June 2023 - December 31, 2027.

All vessel traffic is prohibited in the strait 'Mellansundet' between 'Stensjö' and the bridge to the island 'Nyckelö' during the stated period of time.

Insert	limit of area into which entry is prohibited a) - d)	a)	59-28,893N	016-18,276E	refer to chartlet
		b)	59-28,586N	016-17,779E	
		c)	59-28,558N	016-17,832E	
		d)	59-28,803N	016-18,264E	

Bsp Mälaren - Hjälmarén 2020/s19



Entry prohibited in Mellansundet, lake Mälaren

Länsstyrelsen i Västmanlands län. Publ. 12 Jul 2023

Central Baltic

* 17713

Chart: 622

Sweden. Central Baltic. E of Valdemarsvik. Gryt. Årsviken. Maximum speed.

Move	text '7 kn' approximately 500 meters southwest to position	58-11,90N	016-49,10E
-------------	--	-----------	------------

Bsp Ostkusten 2021/s41, Bsp Ostkusten 2023/s41

Länsstyrelsen i Östergötland. Publ. 12 Jul 2023

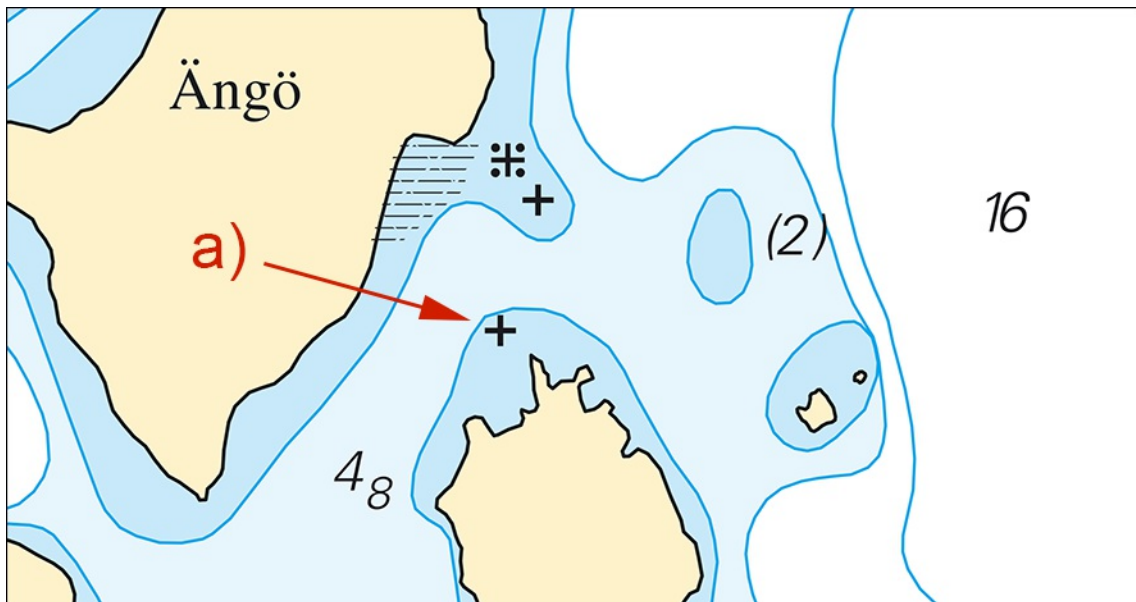
* 17758

Chart: 623

Sweden. Central Baltic. S of Västervik. NE of Blankaholm. SE of Ängö.
Underwater rock.

Insert	underwater rock in position a)	a)	57-35,619N	016-32,821E
Amend	3 m depth contour so that position a) is encircled according to chartlet			

Bsp Kalmarsund 2019/s08, Bsp Kalmarsund 2023/s08



Underwater rock and extended 0-3 m depth contour, Ängö

Sjöfartsverket. Publ. 12 Jul 2023

Southern Baltic

*** 17794 (T)**

Chart: 74, 83, 839, 921

Sweden. Southern Baltic. South-Western Baltic. South Coast. Marine geological survey.

Period of time: Aug 7 - Nov 3, 2023.

Marine geological survey will be performed in the Swedish economic zone in the Southern Baltic Sea and Southwest Baltic Sea by the vessel S/V Ocean Surveyor (SBJO). During the marine surveys, measuring equipment will be towed about 1000 m behind the survey vessel.

Seafarers are advised to keep a safe distance of at least 1 M.

For further information, please contact S/V Ocean Surveyor, phone. +46(0) 730-44 33 14 or VHF ch 16.

Research area, western point	a)	55-18N	012-38E
Research area, southern point	b)	54-58N	013-58E
Research area, mid point	c)	55-42N	015-02E
Research area, southeastern point	d)	55-22N	016-31E
Research area, northeastern point	e)	56-12N	016-24E

Bsp Hanöbukten 2022/s13, s14, s15, s20, s21, s23, s24, s25, s26, s27, s28, s29, s30, s31, s32

Sveriges geologiska undersökning. Publ. 12 Jul 2023

*** 17796 (T)****Chart: 71, 713, 714, 74, 83****Sweden. Southern Baltic. Öland. Bornholm. Works. Cable operation. July - August 2023.**Expired notices: [2023:967/17743\(T\)](#)

Time: July 24 - August 21, 2023

Cable laying works between Öland and Bornholm is delayed and will be performed during stated time.

Work vessel C/S Pleijel/SMWY.

Mariners are requested to maintain safety distance 0,5 M during cable operations.

Planned route for cable operation 1) - 13)	1)	55-15,61N	014-48,95E	Landing point Bornholm
	2)	55-16,62N	014-51,28E	
	3)	55-26,47N	015-08,05E	
	4)	55-30,47N	015-14,70E	
	5)	55-33,28N	015-22,51E	
	6)	55-37,65N	015-34,75E	
	7)	55-39,55N	015-39,90E	
	8)	55-57,83N	016-16,45E	
	9)	56-04,76N	016-30,36E	
	10)	56-12,95N	016-33,78E	
	11)	56-13,50N	016-33,50E	
	12)	56-14,46N	016-30,01E	
	13)	56-14,65N	016-28,82E	Landing point Öland

Bsp Hanöbukten 2022/s05, s06, s07

C/S Pleijel. Publ. 12 Jul 2023

South-Western Baltic*** 17794 (T)****Chart: 74, 83, 839, 921****Sweden. Southern Baltic. South-Western Baltic. South Coast. Marine geological survey.**

The notice is displayed in its entirety under the area Southern Baltic in the booklet.

Lake Vänern and Trollhätte Canal

LEGO PATENT AND TRADEMARK CASES

* 17540

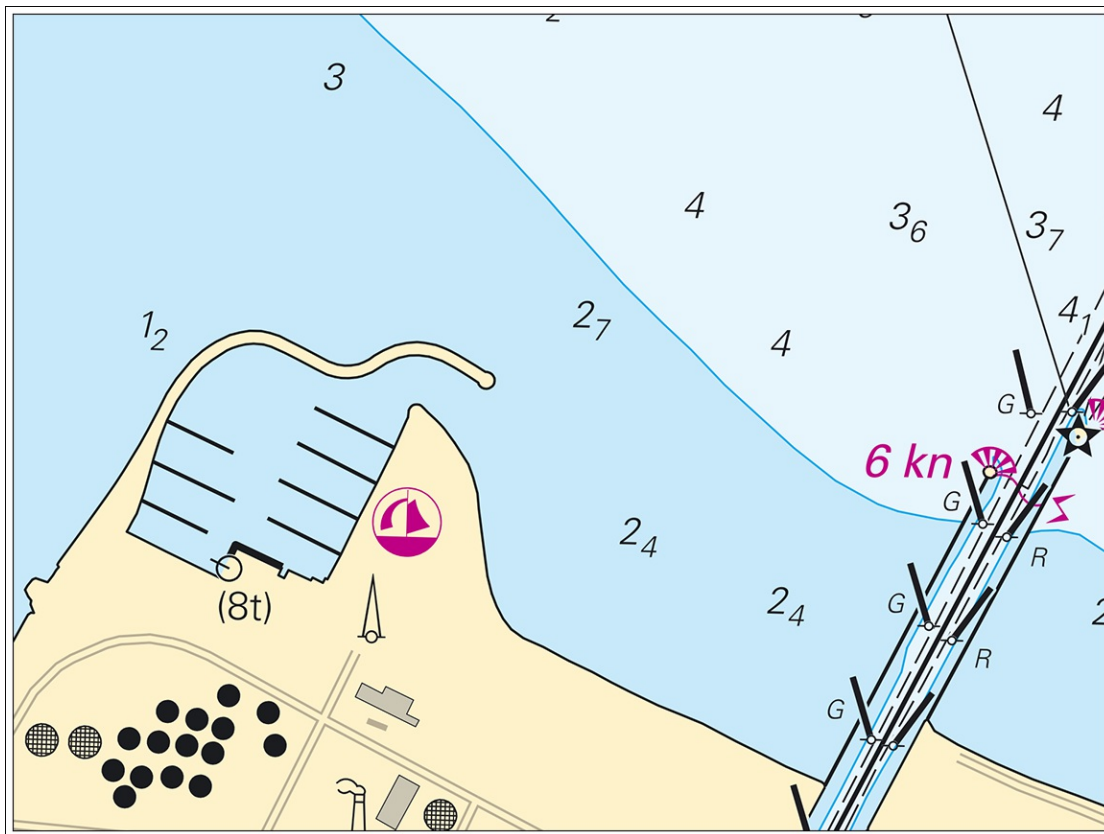
Chart: 13, 135

Sweden. Lake Vänern and Trollhätte Canal. Lidköping. Marina. Port entrance moved.

The entrance to Lidköping marina (including guest harbour) is moved. Further changes might be made continuously.

Amend	port entrance according to chartlet	a)	58-30,912N	013-09,522E
Delete	starboard-hand spar buoy	b)	58-30,955N	013-09,283E
Delete	port-hand spar buoy	c)	58-30,942N	013-09,315E
Delete	starboard-hand spar buoy	d)	58-30,917N	013-09,327E
Delete	beacon with floodlight	e)	58-30,939N	013-09,338E
Delete	beacon with floodlight	f)	58-30,906N	013-09,333E
Delete	port-hand spar buoy	g)	58-31,063N	013-09,370E
Delete	starboard-hand spar buoy	h)	58-31,073N	013-09,333E
Delete	starboard-hand spar buoy	i)	58-30,935N	013-09,294E

Bsp Vänern 2022/s04, s05, s09, s33, s49



New port entrance

*** 17755**

Chart: 131, 132

**Sweden. Lake Vänern and Trollhätte Canal. Lake Vänern. S of Karlstad.
Hammarö. Buoyage.**

Insert	starboard-hand light buoy F G	59-20,33N	013-31,48E
---------------	-------------------------------	-----------	------------

Bsp Vänern 2022/s12

Transportstyrelsen. Publ. 12 Jul 2023